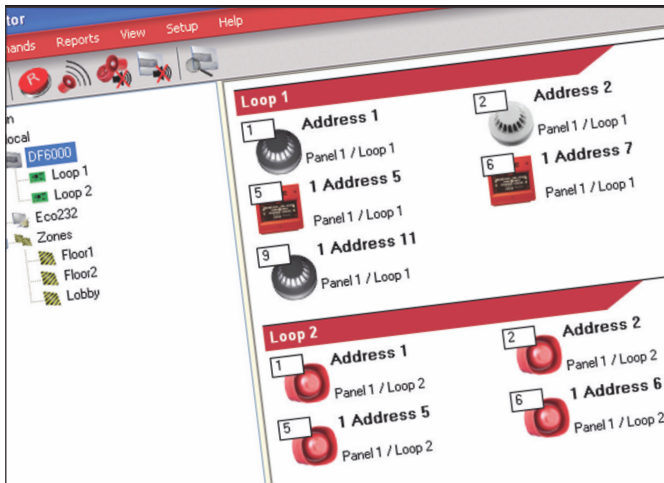


# Site monitor software



## 1.1.1 Monitoring Service

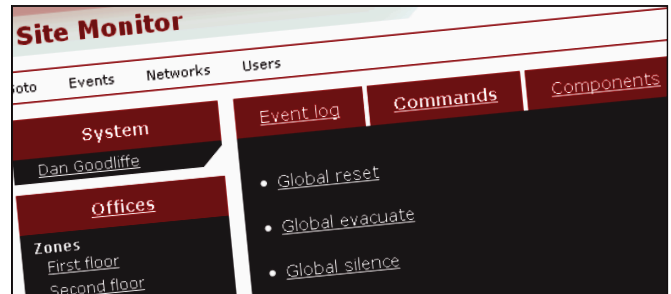
This component runs as a pair of Windows services in the background while ever the PC is turned on, assuming the services are set to automatic start up. To change this behaviour please refer to the documentation for your version of Windows for more details on service administration. This component is responsible for providing the link from the PC to the panel network, event monitoring and the XML interface to clients.

## 1.1.2 Desktop User Interface

This is a dialog based Windows client suitable for connecting to the monitoring service via TCP for viewing and configuring the network status and events. This client provides full access to all logged and real-time monitoring events as well as the ability to perform simple commands such as enable, disable and analogue value retrieval. Depending on your edition, this software may require a license key.

## 1.1.3 Web User Interface

Providing the same functionality as the desktop user interface, this ASPNet web application allows access via a web browser (such as Internet Explorer, Mozilla, Opera...etc.). This gives the advantage of quick access from any location or computer without the need to install the desktop user interface client. To use this component, a suitable ASPNet enabled web server must be installed. It is also important to note that no web server is provided by the Site Monitor package. However, you can use any ASPNet 2 enabled web server, such as Microsoft IIS or UltiDev Cassini.



Site monitor / webservice software is designed to monitor Cooper fire systems and allow quick PC based administration.

Using a simple interface, authorized users can view control panel event history, event status, device properties and other information depending on access permissions defined by the system administrator.

## 1.2 Requirements

All components require that Microsoft .Net v2.0 (or compatible) be installed. The monitoring service also requires Microsoft SQL Server Compact v3.5

SP1 or above and a Windows based PC capable of running services (Microsoft Windows 2000 and above). For the connection to the network, your PC will also require at least one available Serial or USB port.

To use the web user interface component, you must ensure a suitable ASPNet enabled web server is installed. This web interface is designed for all standard compliant browsers, such as Internet Explorer 6 and above, Mozilla, Opera, Safari...etc.

**Note:** More information on installation is provided on the CD accompanying the product.

**Eaton**  
Cooper Lighting and Safety Ltd  
Wheatley Hall Road  
Doncaster  
DN2 4NB  
United Kingdom  
www.cooperfire.com

**Eaton**  
EMEA Headquarters  
Route de la Longeraie 7  
1110 Morges, Switzerland  
www.eaton.uk.com/electrical

© 2014 Eaton  
All Rights Reserved  
Publication No. PR-000-00-565  
February 2014

Changes to the products, to the information contained in this document, and to prices are reserved; so are errors and omissions. Only order confirmations and technical documentation by Eaton is binding. Photos and pictures also do not warrant a specific layout or functionality. Their use in whatever form is subject to prior approval by Eaton. The same applies to Trademarks (especially Eaton, Moeller, and Cutler-Hammer). The Terms and Conditions of Eaton apply, as referenced on Eaton Internet pages and Eaton order confirmations.

Eaton is a registered trademark.

All other trademarks are property of their respective owners.